

# STANDARD RATINGS AND DIMENSIONS

## ARI Standard Ratings

UNIT TYPE	UNIT SIZE, COIL ROWS	NOMINAL CFM	COOLING CAPACITY		WATER PRESS. DROP FEET OF WATER	POWER INPUT WATTS
			TOTAL BTUH	SENSIBLE BTUH		
VFE	20, 3 Row (3C)	250	1.5	7,500	1.3	75
VFS (Exposed)	30, 3 Row (3C)	500	2.4	10,900	2.4	135
	40, 3 Row (3C)	750	3.2	14,700	3.2	200
VFC (Concealed)	50, 3 Row (3C)	1000	4.9	22,700	5.5	395
	60, 3 Row (3C)	1250	5.9	26,900	7.5	355
VFE	20, 4 Row (4C)	250	1.9	9,100	2.4	65
VFS	30, 4 Row (4C)	500	2.8	13,200	4.1	125
	40, 4 Row (4C)	750	3.9	18,200	4.4	185
VFC	50, 4 Row (4C)	1000	5.8	27,400	8.3	365
	60, 4 Row (4C)	1250	6.7	32,400	13.6	350

**NOTE:**  
 1. Based on 80°F DB and 67°F WB EAT, 45°F EWT, 10°F temperature rise, high fan speed.  
 2. Motor voltage 115/1/60. Airflow under dry coil conditions.

## Heating Capacity

UNIT TYPE	UNIT SIZE	NOMINAL CFM	1 ROW		2 ROW		3 ROW		4 ROW					
			SMBH	GPM	WPD	SMBH	GPM	WPD	SMBH	GPM	WPD			
VFE	20	250	8.5	0.4	0.3	15.5	0.8	1.5	19.5	1.0	0.5	22.6	1.2	0.8
VFS	30	500	13.6	0.7	0.9	24.8	1.3	5.1	32.4	1.7	1.8	37.8	1.9	3.1
VFC	40	750	19.5	1.0	2.1	33.3	1.7	1.9	45.4	2.3	1.4	53.4	2.7	2.4
	50	1000	23.9	1.2	0.7	44.8	2.3	3.5	61.5	3.1	2.6	72.2	3.7	4.5
	60	1250	31.9	1.6	6.2	55.0	2.8	5.6	75.9	3.9	4.3	88.9	4.5	7.4

**NOTE:**  
 1. Based on 70°F DB EAT, 180°F EWT, 40°F temperature drop, high fan speed.

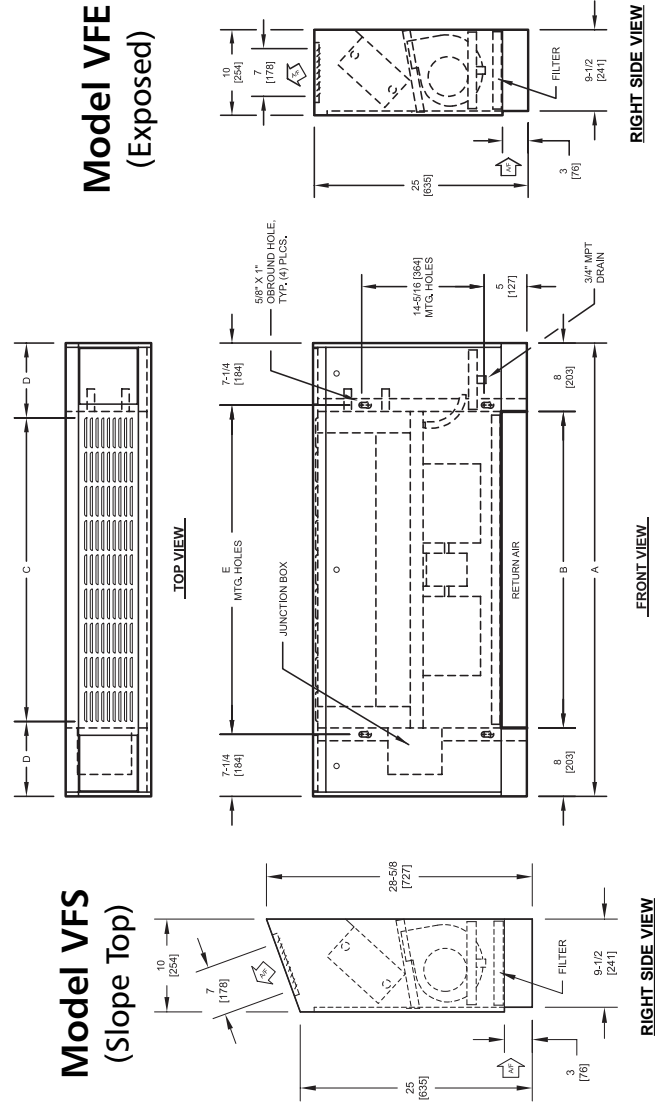
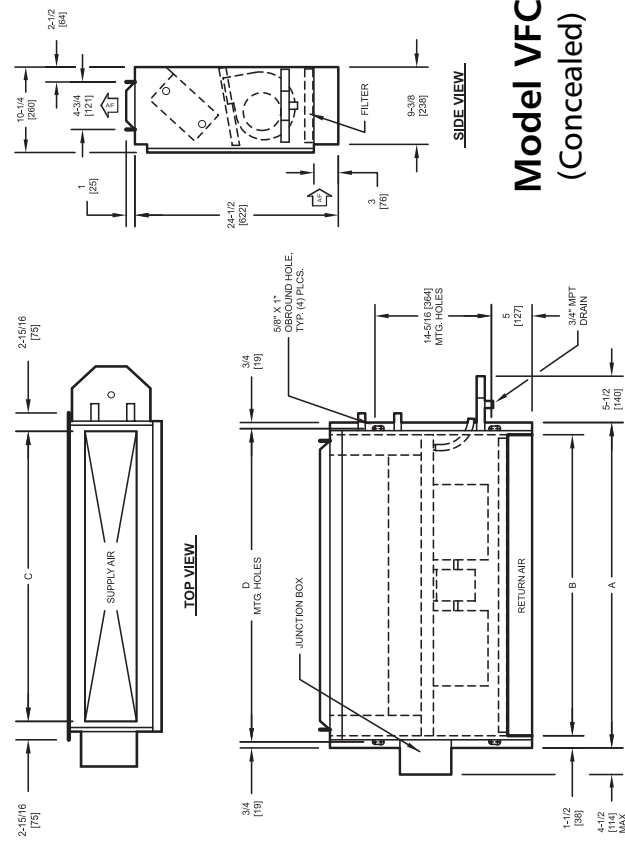
## Model VFC

UNIT SIZE	A	B	C	D
	[762]	[686]	[613]	[724]
30	40	37	34 1/2	38 1/2
	[1016]	[940]	[876]	[978]
40	50	47	44 1/2	48 1/2
	[1270]	[1194]	[1121]	[1232]
50	60	57	54 1/2	58 1/2
	[1524]	[1448]	[1375]	[1486]
60	70	67	64 1/2	68 1/2
	[1778]	[1702]	[1629]	[1740]

## Model VFE/VFS

UNIT SIZE	A	B	C	D	E
	[1092]	[686]	[597]	[248]	[724]
30	53	37	31 1/2	10 1/4	38 1/2
	[1346]	[940]	[800]	[273]	[978]
40	63	47	43 1/2	9 1/4	48 1/2
	[1600]	[1194]	[1105]	[248]	[1232]
50	73	57	51 1/2	10 1/4	58 1/2
	[1854]	[1448]	[1308]	[273]	[1486]
60	83	67	63 1/2	9 1/4	68 1/2
	[2108]	[1702]	[1613]	[248]	[1740]

**NOTE:** All dimensions are in inches (millimeters).



# ENVIRO-TEC® MODEL VF FAN COIL UNIT

## ARCHITECTURALLY PREFERRED

APPLICATION  
FLEXIBILITY

QUIET  
COMFORT

EASILY  
SERVICED



ENVIRO-TEC® is a registered trademark of Environmental Technologies, Inc.

©2001 Environmental Technologies, Inc.  
 All rights reserved.

**ENVIRONMENTAL TECHNOLOGIES, INC.**  
 ENGINEERING FOR EXCELLENCE

6750 Bryan Dairy Rd. • Largo, FL 33777 • 727-541-3531 • Fax 727-545-1028  
 www.enviro-tec.com

Stock ID SS-FCUVF • 8/2001 • Part No. PX-00-0059

# RAISING THE STANDARD IN FLEXIBILITY AND PERFORMANCE

## CONTRACTORS

ENVIRO-TEC® model VFE vertical exposed, VFS sloped top, and VFC vertical concealed fan coil units provide maximum performance while reducing installed cost to the contractor. Ultra narrow profile design (maximum 10" deep and 25" high\*; up to 1250 CFM) allows installation virtually anywhere. Access to all components through the front panel with only a screwdriver makes service easy.

## DESIGNERS

The VF's modular construction and number of available sizes renders unparalleled flexibility. Available with chilled water or DX cooling, and hot water, steam or electric heating coils, ENVIRO-TEC® VF fan coils produce the ultimate in comfort and flexibility.

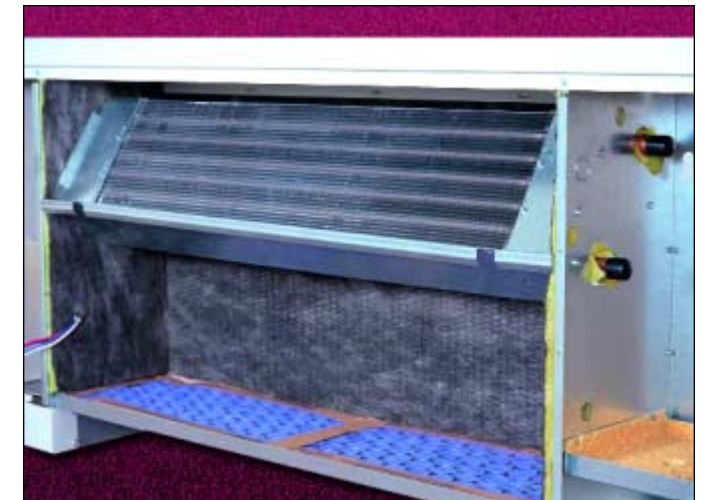
## OWNERS

ARI 440 certification ensures exacting performance. Concerned about indoor air quality? Sloped, anti-microbial treated drain pans are standard features on VF Series fan coils. The drain pans and coils are easily removed for cleaning.



## END POCKETS

The 8" end pockets allow for accessibility and service of optional factory piping packages and controls. End panels are removable to allow for even greater access.



## COILS

All units are available in 2 or 4 pipe configurations. The heating coil is standard in the reheat position. Heating and cooling coils are available with same or opposite end connections. Access for cleaning on the entering air side is available when the drain pan is removed. Coils are removable for service or replacement.

## MODEL VF STANDARD AND OPTIONAL FEATURES

### STANDARD FEATURES

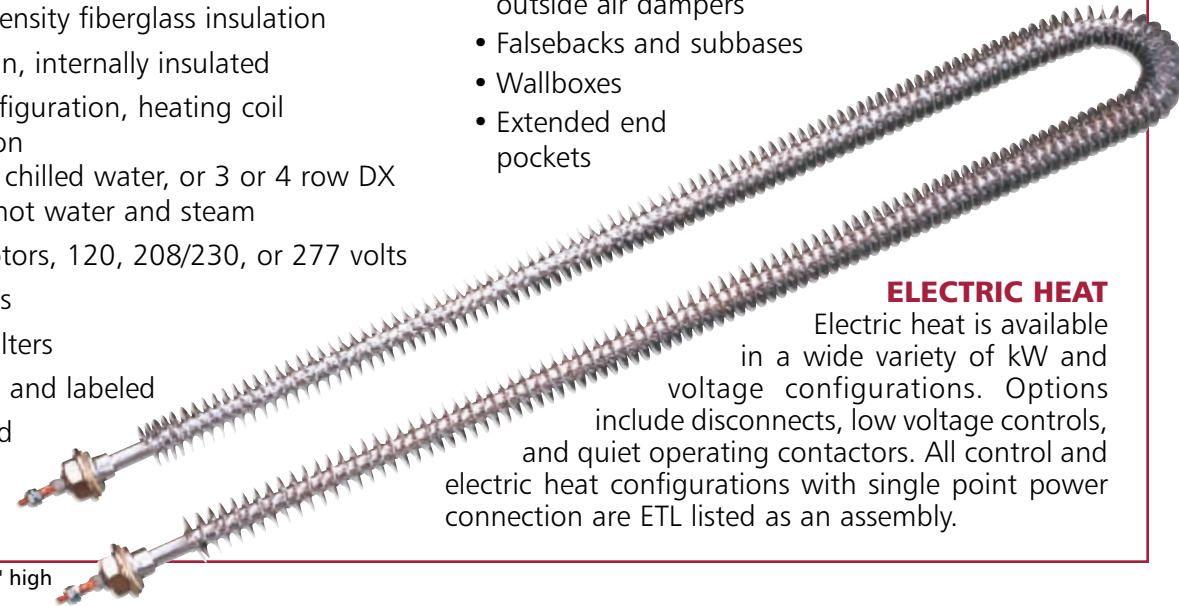
- Narrow profile, 10" depth and 25" height\* all sizes
- Heavy gauge G 60, chromate coated galvanized steel casing construction
- 18 gauge galvanized steel exterior cabinet construction
- Stamped louver discharge grille
- Durable powder coat paint finish, inside and outside
- 1/2" 4lb. dual-density fiberglass insulation
- Sloped drain pan, internally insulated
- 2 or 4 pipe configuration, heating coil in reheat position
  - 2, 3 or 4 row chilled water, or 3 or 4 row DX
  - 1 and 2 row hot water and steam
- Multi-speed motors, 120, 208/230, or 277 volts
- Manual air vents
- 1" throwaway filters
- ETL safety listed and labeled
- ARI 440 certified

### OPTIONAL FEATURES

- Stainless steel drain pan
- Stainless steel auxiliary drain pan
- 16 gauge front panel construction
- Foil faced insulation
- Auto air vents
- Double deflection or linear bar discharge grilles
- Stamped return air louver
- Manual or motorized outside air dampers
- Falsebacks and subbases
- Wallboxes
- Extended end pockets

### ELECTRIC HEAT

Electric heat is available in a wide variety of kW and voltage configurations. Options include disconnects, low voltage controls, and quiet operating contactors. All control and electric heat configurations with single point power connection are ETL listed as an assembly.



\* VFS sloped top, 28 5/8" high



## FAN DECK

The fan/drain pan assembly is easily removable for service access to motors and blowers at, or away from, the unit.

## DRAIN PAN

The sloped insulated drain pan is available in stainless steel construction. Standard drain pans are internally insulated, single wall galvanized steel. The VF Series fan/drain pan assembly is easily removable for cleaning.



## FILTER

The filter is easily replaceable through the return air toe space without requiring removal of the front panel.

## POWDER COATED PAINTED SURFACE

Textured decorator, powder coat finish resists scuffing, scratching, fading, and fingerprints.



ENVIRO-TEC® offers an expanding range of selection programs for unit and coil selection. See your representative for more information. Complete catalog data is also available online at [www.enviro-tec.com](http://www.enviro-tec.com)